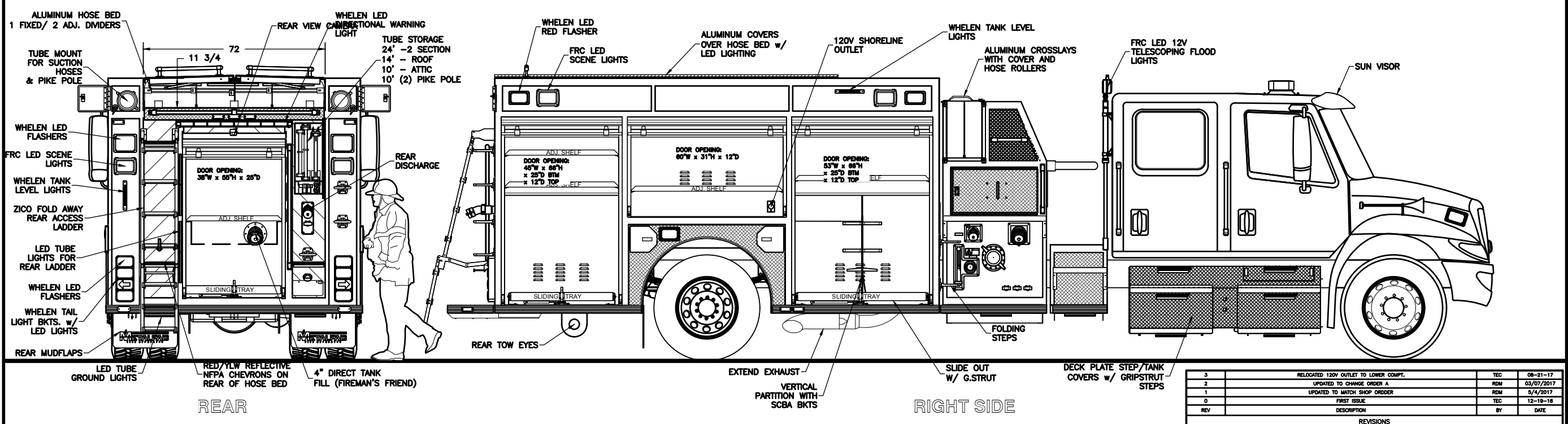
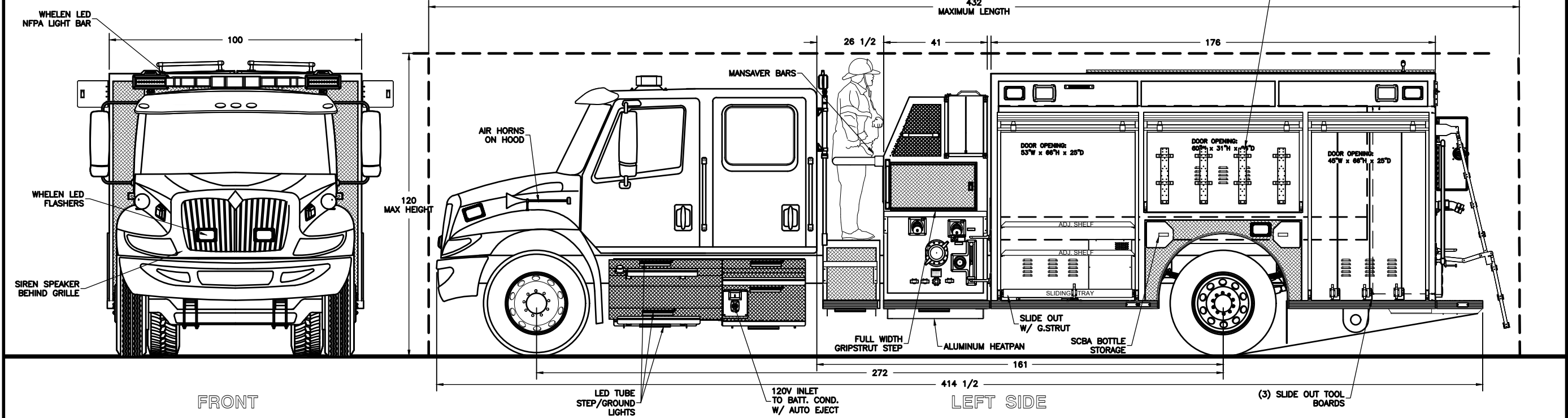


NOT SHOWN:  
 ENGINE COMPT. LIGHTS  
 LED TUBE COMPT. LIGHTS  
 TURTLE TILE COMPT. FLOOR MATTING  
 BACK UP ALARM  
 KUSSMAUL BATT. CONDITIONOR  
 DOOR AJAR LIGHT IN CAB  
 CONSOLE IN CAB

UNDERCOAT VEHICLE  
 REFLECTIVE STRIPING  
 HEATER IN PUMPHOUSE



CHASSIS: INTERNATIONAL 4400 DURA STAR 4 DOOR  
 PUMP: HALE QFLO 1050 IGPM MIDSHIP  
 TANK: 1000 Imp. Gal. POLYPROPYLENE  
 20 Imp. Gal. POLYPROPYLENE FOAM CELL  
 FOAM: FOAM PRO 1600

SUCTION: 1 - 6" LEFT (NO GATE)  
 1 - 6" RIGHT (NO GATE)  
 1 - 3" TANK TO PUMP  
 1 - 2 1/2" LEFT  
 1 - 2 1/2" RIGHT

DISCHARGES: 1 - 4" RIGHT (3" VALVE)  
 2 - 2 1/2" LEFT  
 1 - 2 1/2" RIGHT  
 1 - 2 1/2" REAR  
 1 - 2" TANK FILL

REV	DESCRIPTION	BY	DATE
3	RELOCATED 120V OUTLET TO LOWER COMPT.	TEC	08-21-17
2	UPDATED TO CHANGE ORDER A	RCM	03/07/2017
1	UPDATED TO MATCH SHOP ORDER	RCM	5/4/2017
0	FIRST ISSUE	TEC	12-19-16

WEST ELGIN  
 FIRE SERVICE  
 JOB NO. 19268/19269  
 DRAWN BY T CULLINS  
 DATE 12-19-16  
 METALFAB LTD.  
 847 CENTRAL ST. CENTREVILLE  
 NB. CANADA E7K 2E8

TITLE GENERAL ARRANGEMENT

DRAWING NO. FT-10915

REV 3

-ALL ALUMINUM CONSTRUCTION - ALL DIMENSIONS ARE IN INCHES & APPROXIMATE