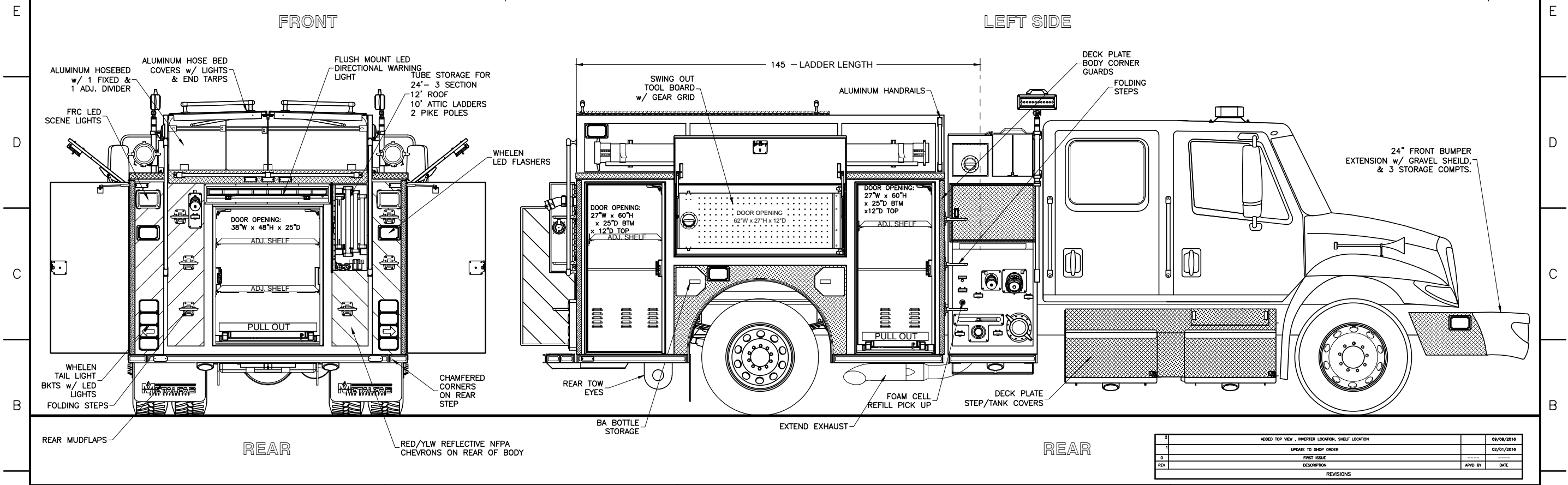
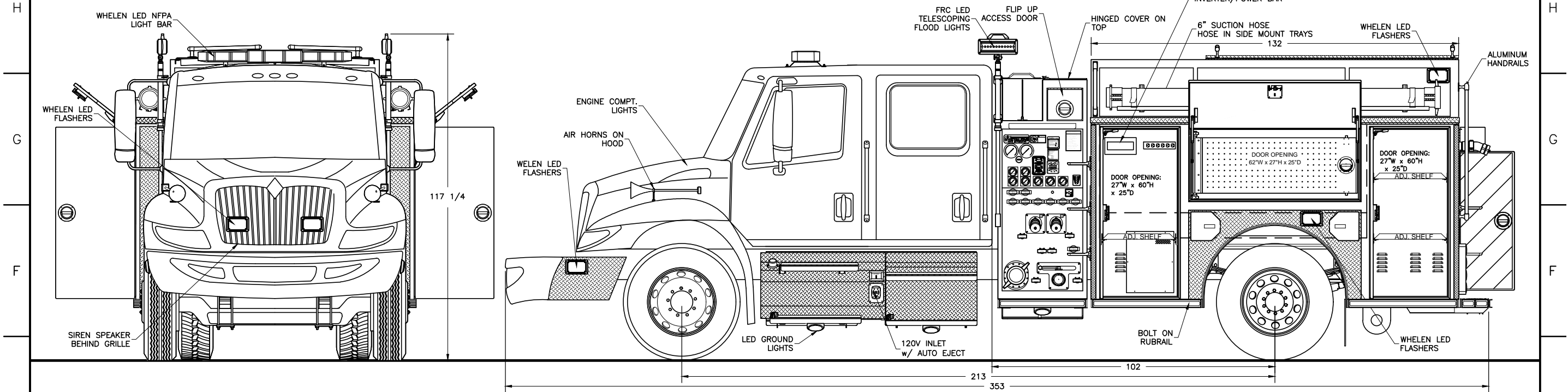


NOT SHOWN:  
 SCBA BKTS - CREW CAB MOUNT  
 KUSSMAUL PUMP/PLUS BATT. COND.  
 4 - VULCAN HAND HELD STREAM LIGHTS



CHASSIS: INTERNATIONAL 4300 4 DOOR  
 PUMP: WATEROUS 1050 IGPM CXVPA PTO DRIVE  
 TANK: 500 Imp. Gal. POLYPROPYLENE  
 1 - 30 Imp. Gal. FOAM CELL  
 FOAM: HYPRO FOAMPRO 2001

SUCTION: 1 - 6" LEFT  
 1 - 6" RIGHT  
 1 - 4" TANK TO PUMP (PNEUMATIC)  
 1 - 2 1/2" LEFT  
 1 - 2 1/2" RIGHT

DISCHARGES: 1 - 4" RIGHT  
 2 - 2 1/2" LEFT  
 1 - 2 1/2" RIGHT  
 1 - 2 1/2" REAR (FOAM)  
 1 - 2" TANK FILL  
 2 - 1 1/2" CROSSLAYS (FOAM)

REV	DESCRIPTION	APD BY	DATE
1	ADDED TOP VIEW, INVERTER LOCATION, SHELF LOCATION		09/08/2016
2	UPDATE TO SHOP ORDER		02/01/2016
3	FIRST ISSUE		
4			
5			

SUBBURY  
 FIRE DEPARTMENT  
 JOB NO.: PROPOSAL  
 DRAWN BY: T CULLINS  
 DATE: 07-21/2015  
 METALFAB LTD.  
 847 CENTRAL ST. CENTREVILLE  
 NB. CANADA E7K 2E8

TITLE: GENERAL ARRANGEMENT

DRAWING NO.: FT-10596 SHT 1 OF 2  
 REV: 2

-ALL ALUMINUM CONSTRUCTION - ALL DIMENSIONS ARE IN INCHES & APPROXIMATE